

Permissions For Reprints Contact: 1-800-640-8285

How To Install A Solid-Type Wall Mounted Door Stop

If you don't care for the wall bumper in Recipe 31, we herein offer you another variety. It's just as easy to install, and performs its task to the same end: to protect your walls.

Utensils

Ruler
Pencil
Hammer
Awl
Electric or hand drill
Carbide bit to fit fiber anchor
Pliers

Ingredients

Solid-type wall bumper
Epoxy glue set
Fiber anchors and screws to fit bumper (see chart on screws)

Approximate Time: 15 To 30 Minutes

1. On the wall, measure in 1" inches from the latch-side edge of the door, 3" to 4" inches from the floor (Figs. 32A and 32B). Mark the spot with pencil.
2. At that spot, punch in a small hole with the awl.
3. Insert bumper screw into position. If secure, remove.
4. Mix epoxy glue.
5. Apply glue to flange of screw and reinsert snugly into hole (Fig. 32C).
6. If wall is masonry:
 - a. Drill hole with carbide bit and insert fiber anchor.
 - b. Apply glue to back of bumper.
 - c. Using pliers, screw bumper securely into position on the wall.

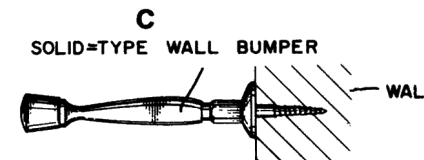
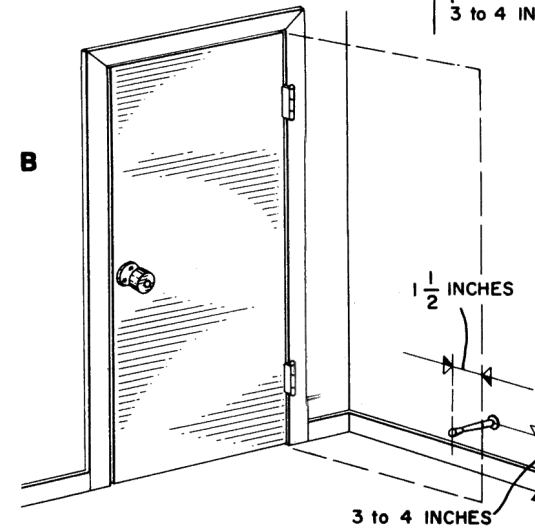
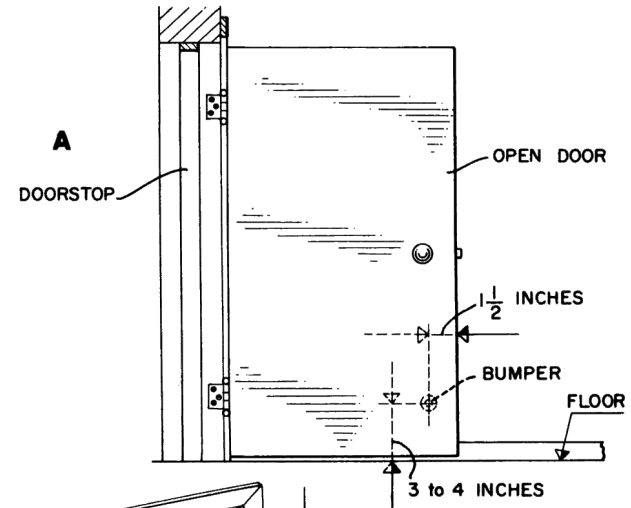


Figure 32.
Solid Type Wall Bumper Solution