

How To Hang A Heavy Picture Frame or Mirror

The principle for hanging a heavy picture frame or mirror is the same as that applied in hanging a lighter object. But there is one essential difference: weight. If you hang a 50 pound gilt mirror on a wall that can't stand the tension, the wall will do exactly what humans do when they can't stand the tension: fall apart. Follow these steps carefully to avoid accidents.

Utensils

Tape measure or ruler
Hammer
Spirit level
Medium-heavy flat blade screwdriver

Ingredients

1/4" Inch by 12" inch piece of plywood, 3" or 4" inches shorter than the horizontal dimension of the frame to be hung
1 dozen 1/2" inch common nails with heads
1/2" inch wood screws with round heads

Approximate Time: 40 To 75 Minutes

1. With tape measure, mark off spot on wall where you wish picture or mirror hung.
2. Center the plywood over spot and drive one nail diagonally through it and into the wall.
3. Level plywood (Fig. 39A). See Recipe 11 on How to Use a Spirit Level.
4. Drive several more nails into plywood until it is secure.
5. Now begin the process of locating studs or beams in the wall behind the plywood:

a. Starting from the right, under the plywood, drive a nail into the wall. If you feel the nail sink into wood, you know you've located the stud (Fig. 39B). If this is the case, mark up with level a line from that hole onto the face of plywood (Fig. 39B). If you have missed the stud, nail into wall 1" inch to the left of previous hole. Repeat until stud is located.

b. Once stud is located, measure 16" inches to the left and drive in another nail (Fig. 39C). It, too, will be embedded in a stud. Measure up line onto face of plywood.

7. Once this is done, the plywood is secure, and you must now mark off two locations for the wood screws that will carry the weight of the picture frame or mirror (Fig. 39D). Spacing of the screws depends on how your particular frame must be hung. Some frames hang on a wire, others by hooks.

8. Drive screws into place.

9. Now you may safely hang picture or mirror.

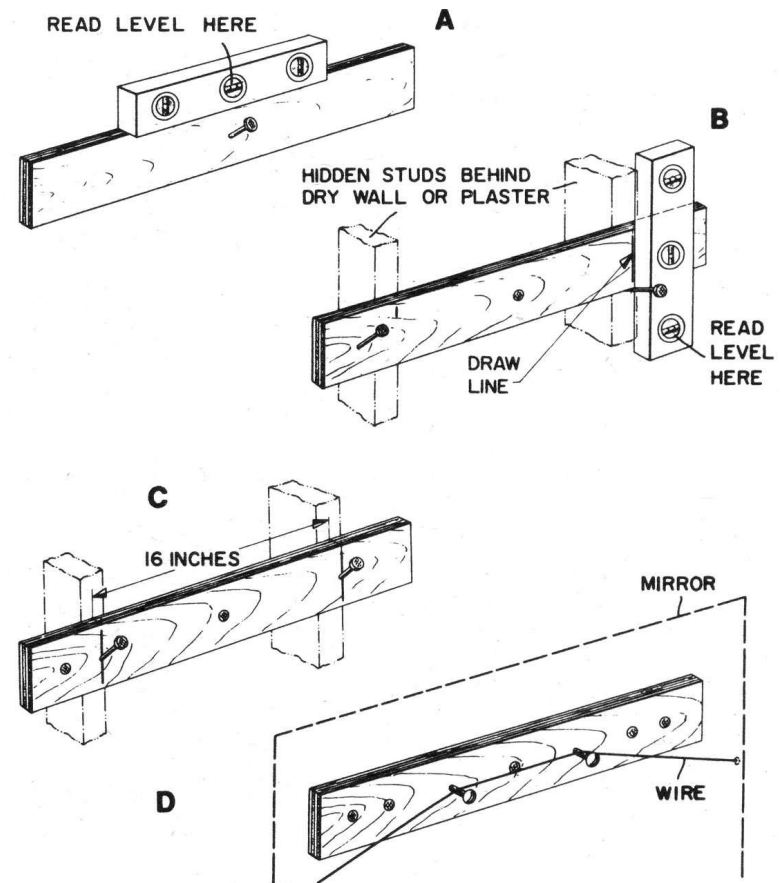


Figure 39.
Heavy Picture-Hanging Solution